

# What to do if a Person is Symptomatic at School



If a person has one or more of these symptoms:

- Fever ( $\geq 100.4^{\circ}\text{F}$ ) or chills
- Shortness of breath or difficulty breathing
- Muscle or body aches
- New loss of taste or smell
- Cough (new, changed, or worsening)



They should isolate at home AND get tested for COVID-19

If they do not receive an alternative named diagnosis from a health care provider **OR** do not get tested



They test **POSITIVE** for COVID-19



They test **NEGATIVE** for COVID-19 **OR** receive an alternative named diagnosis from a health care provider plus a negative test

AND

**Isolate at home**

Can return to school if:

1. 5 days have passed since symptoms started, or since test date if no symptoms.
2. No fever within the past 24 hours (without medication).
3. Symptoms are gone or resolving.

Strict mask use is expected days 6-10, including during sports.  
An antigen test can be done on day 5, but is not required

**Identify close contacts**

See **Tree 2** and follow [COVID-19 Contact Tracing Guide for K-12 Schools](#)

**Return to school**

They can return to school if:

1. No fever within the past 24 hours (without medication)

**AND**

2. Symptoms have significantly improved

- Congestion or runny nose
- Nausea, vomiting, or diarrhea
- Headache
- Fatigue
- Sore throat



They should isolate at home

Was **only ONE** symptom present?

**NO**

**YES**

Did the symptom resolve within 24 hours **OR** are they consistent with a diagnosed chronic illness?

**NO**

**YES**

Are they a known **close contact**?

**NO**

**YES**

see **tree 2**

Adapted by LCPHSS for use by Lewis County WA School districts 1/13/22



DOH 820-229

To request this document in another format, call 1-800-525-0127. Deaf or hard of hearing customers, please call 711 (Washington Relay) or email [civil.rights@doh.wa.gov](mailto:civil.rights@doh.wa.gov).

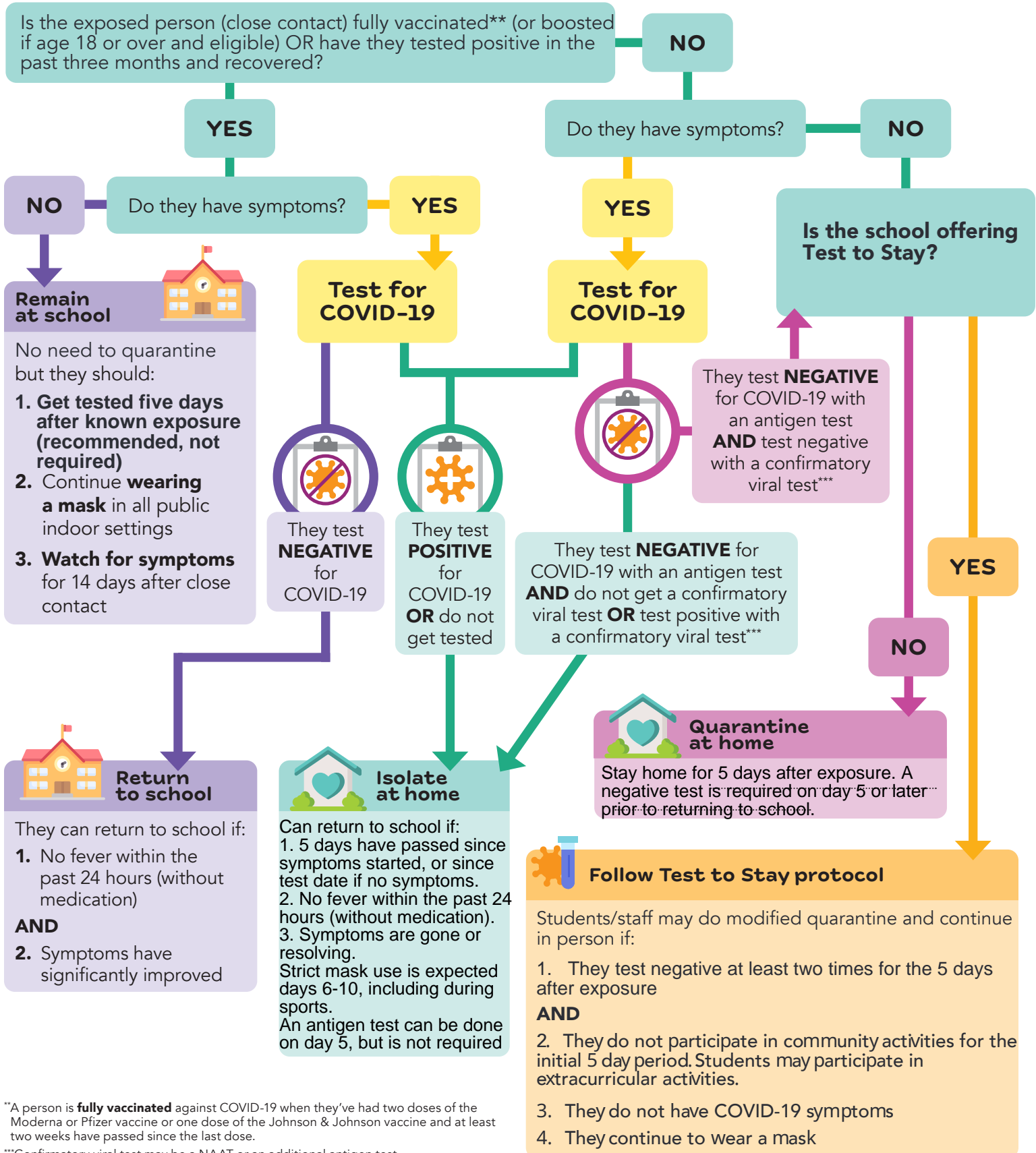


**\*Close contact:** Someone who was within 6 feet of a COVID-19 positive person for a total of 15 minutes or more within 24 hours during the case's contagious period. In a K-12 indoor/outdoor classroom, the close contact definition excludes students who were at least three feet away from an infectious student when both students were consistently and correctly wearing masks. Please see the [COVID-19 Contact Tracing Guide for K-12 Schools](#) for additional information. The definition of a close contact may vary in some situations. The local health department makes the ultimate determination of a close contact during its investigation, but may delegate this decision if appropriate.

# Identify and Care for Close Contacts at School



## If there is a COVID-19 positive person at school:



\*\*A person is **fully vaccinated** against COVID-19 when they've had two doses of the Moderna or Pfizer vaccine or one dose of the Johnson & Johnson vaccine and at least two weeks have passed since the last dose.

\*\*\*Confirmatory viral test may be a NAAT or an additional antigen test

Boosters are recommended 5 months after 2nd shot of Pfizer or Moderna, and 2 months after J&J

# COVID-19 Contact Tracing Checklist for K–12 Schools



Use this checklist, along with the **K–12 Isolation and Quarantine Decision Trees** in this document and the supplemental document [COVID-19 Contact Tracing Guide for K–12 Schools](#) to conduct contact tracing for schools. For more detailed information about contact tracing, reporting cases, isolation, and quarantine, please see the [K–12 Supplemental Considerations](#) and [K–12 Requirements](#) documents.

- Contact the COVID-19 case** or their parent/guardian if the case is a minor.
  - Provide instructions for how long the case needs to isolate at home from school & other activities. See the [COVID-19 Contact Tracing Guide for K–12 Schools](#) for information on how long isolation should last.
- Notify your LHJ about any cases.** If needed, use the [School Case and Close Contact Reporting Line List Template](#).
- Determine contagious period for the case.**
  - Confirm the dates the case attended school during contagious period and go over their schedule, including classes and other school-associated activities. See the [COVID-19 Contact Tracing Guide for K–12 Schools](#) for information on identifying the contagious period.
- Identify all close contacts** in school and school-associated activities during the case’s contagious period. Some of this information may come from the case but can be supplemented using attendance records and seating charts. Use the setting prioritization guide in the [K–12 Supplemental Consideration](#) document and consider the following:
  - High Priority Settings (Focus contact tracing efforts here)**
    - Bus rides/routes
    - Indoor classrooms where:
      - » Students are NOT seated at least 3 feet apart\*, **OR**
      - » Students do not consistently distance or wear masks (e.g., younger children, those with a mask exemption, etc.)
    - Indoor meal locations where students are NOT spaced at least 6 feet apart\*\*
    - Health room
    - Indoor breakrooms and workrooms (staff only)
    - Indoor and outdoor school-affiliated activities, especially those that are aerosol-generating (sports, performing arts, cheer, speech/debate, etc.) that take place before, during, or after school
  - Low Priority Settings**
    - Indoor classrooms where students are seated at least 3 feet apart and ALL students were wearing masks\*
    - Outdoor classrooms
    - Indoor meal locations where students have seats that are at least 6 feet apart\*\*
    - Hallways/stairwells and other locations used during transitions periods
    - Restrooms
    - Any outdoor activities or locations (classrooms, meals, PE, etc.) *except for aerosol-generating activities (sports, performing arts, cheer, speech/debate, etc.)*
- Use the decision trees** to determine the appropriate quarantine option for all close contacts. See the [COVID-19 Contact Tracing Guide for K–12 Schools](#) for additional information on quarantine.
- Notify all close contacts** and parents/guardians of all close contacts. Consider using the phone call or letter notification templates in the [K–12 Schools Contact Tracing and Case Investigation Toolkit](#). Notifications should include:
  - Whether and how long a close contact needs to quarantine at home, or if they are eligible for a modified quarantine through Test to Stay.
  - When close contacts should be tested for COVID-19, what type of test they should receive, and information about accessing testing.
  - What COVID-19-like symptoms to look for, and how long to watch for symptoms.
- Notify all students, parents/guardians, and staff who were in the same classroom or school** as the case(s), if agreed upon with your LHJ. Consider using the phone call or letter notification templates in the [K–12 Schools Contact Tracing and Case Investigation Toolkit](#).

\*If students are seated at least 3 feet apart and consistently wearing masks in a school setting, they are not considered close contacts.

\*\*If people are seated at least 6 feet apart when their masks are off, they are not considered close contacts.